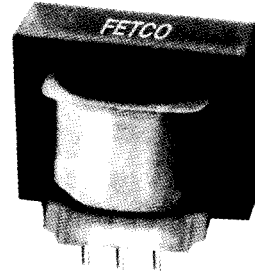


PLUG-IN PRINTED CIRCUIT POWER TRANSFORMER - 8 PINS - DUAL PRIMARY

Features:

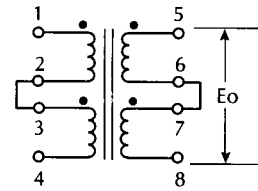
- No electrostatic shield necessary - low capacitive coupling
- Convenient P.C. mounting on industry standard centers
- Series/parallel secondary windings
- Class "S" isolation - 130°C operating temperature
- High isolation - 2,500 hipot



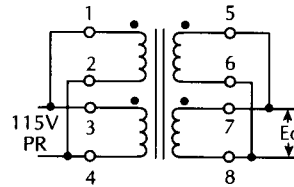
115/230 Volt 50/60 Hz Primary

ELECTRICAL SPECIFICATIONS @ 25°C

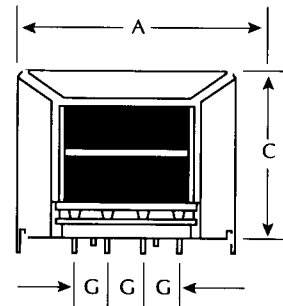
CATALOG NUMBER	SECONDARY RMS RATING		SIZE
	SERIES	PARALLEL	
PCD 10-1.5	10V C.T. @ .15A	5V @ .30A	2
PCD 10-4.4	10V C.T. @ .44A	5V @ .88A	3
PCD 10-10	10V C.T. @ 1.0A	5V @ 2.0A	4
PCD 12-1.5	12.6V C.T. @ .12A	6.3V @ .23A	2
PCD 12-4.4	12.6V C.T. @ .35A	6.3V @ .70A	3
PCD 12-10	12.6V C.T. @ .80A	6.3V @ 1.6A	4
PCD 16-1.4	16V C.T. @ .09A	8V @ .18A	2
PCD 16-4.5	16V C.T. @ .28A	8V @ .55A	3
PCD 16-10	16V C.T. @ .63A	8V @ 1.25A	4
PCD 20-1.6	20V C.T. @ .08A	10V @ .16A	2
PCD 20-4.4	20V C.T. @ .22A	10V @ .44A	3
PCD 20-10	20V C.T. @ .50A	10V @ 1.0A	4
PCD 24-1.4	24V C.T. @ .06A	12V @ .12A	2
PCD 24-10	24V C.T. @ .42A	12V @ .83A	4
PCD 28-1.4	28V C.T. @ .05A	14V @ .10A	2
PCD 28-10	28V C.T. @ .36A	14V @ .72A	4



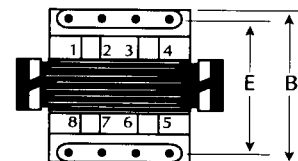
SERIES CONNECTED



SERIES CONNECTED



SIZE	DIMENSIONS (INCHES)					WT. LBS.
	A	B	C	E	G	
2	1.45	1.19	1.22	1.00	.20	.19
3	1.70	1.25	1.45	1.10	.25	.31
4	1.95	1.44	1.72	1.30	.25	.56

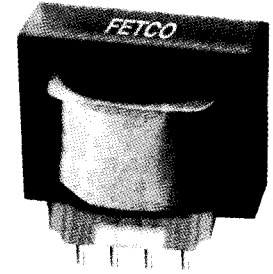


SIZE 3 & 4 ONLY HAVE MOUNTING TABS. P.C. PIN DIMENSIONS .045" X .019".

PLUG-IN PRINTED CIRCUIT POWER TRANSFORMER - 6 PINS - SINGLE PRIMARY

Features:

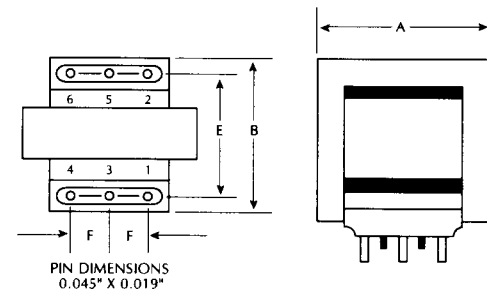
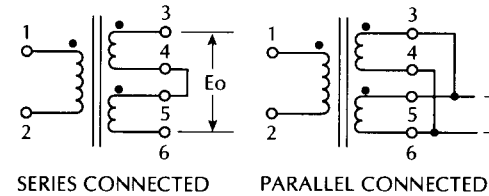
- Compact design for miniaturizes solid state circuitry
- Convenient P.C. mounting on industry standard
- For power supplies, instruments and control applications
- Class "S" isolation - 130°C operating temperature
- Series/parallel secondary windings
- High isolation - 2,500 hipot



115 Volt 60 Hz Primary

ELECTRICAL SPECIFICATIONS @ 25°C

CATALOG NUMBER	SECONDARY RMS RATING		SIZE
	SERIES	PARALLEL	
PCS 10-.5	10V C.T.@ .05A	5V @ .10A	1
PCS 10-1.5	10V C.T.@ .15A	5V @ .30A	2
PCS 10-3	10V C.T.@ .30A	5V @ .60A	2
PCS 10-4.4	10V C.T.@ .44A	5V @ .88A	3
PCS 10-5.0	10V C.T.@ 5.0A	5V @ 1.0A	3
PCS 10-10	10V C.T.@ 1.0A	5V @ 2.0A	4
PCS 12-.5	12.6V C.T.@ .04A	6.3V @ .08A	1
PCS 12-1.5	12.6V C.T.@ .12A	6.3V @ .23A	2
PCS 12-3	12.6V C.T.@ .25A	6.3V @ .50A	2
PCS 12-4.4	12.6V C.T.@ .35A	6.3V @ .70A	3
PCS 12-6.3	12.6V C.T.@ .50A	6.3V @ 1.0A	3
PCS 12-10	12.6V C.T.@ .80A	6.3V @ 1.6A	4
PCS 16-.5	16V C.T.@ .03A	8V @ .06A	1
PCS 16-1.5	16V C.T.@ .09A	8V @ .18A	2
PCS 16-3	16V C.T.@ .18A	8V @ .36A	2
PCS 16-4.5	16V C.T.@ .28A	8V @ .55A	3
PCS 16-4.8	16V C.T.@ .30A	8V @ .60A	3
PCS 16-.10	16V C.T.@ .63A	8V @ 1.25A	4
PCS 20-.16	20V C.T.@ .08A	10V @ .16A	2
PCS 20-3	20V C.T.@ .15A	10V @ .30A	2
PCS 20-4.4	20V C.T.@ .22A	10V @ .44A	3
PCS 20-6	20V C.T.@ .30A	10V @ .60A	3
PCS 20-10	20V C.T.@ .50A	10V @ 1.0A	4
PCS 24-1.5	24V C.T.@ .06A	12V @ .12A	2
PCS 24-4.4	24V C.T.@ .18A	12V @ .36A	3
PCS 24-12	24V C.T.@ .50A	12V @ 1.0A	4
PCS 28-1.4	28V C.T.@ .05A	14V @ .10A	2
PCS 28-4.5	28V C.T.@ .16A	14V @ .31A	3
PCS 28-10	28V C.T.@ .36A	14V @ .72A	4



SIZE	DIMENSIONS (INCHES)					W LB
	A	B	C	E	F	
1	1.05	0.94	0.84	0.78	0.20	.06
2	1.46	1.19	1.22	1.00	0.31	.15
3	1.70	1.25	1.45	1.10	0.40	.31
4	1.95	1.44	1.72	1.30	0.40	.56

230 Volt 50/60 Hz Primary

CATALOG NUMBER	SECONDARY RMS RATING		SI
	SERIES	PARALLEL	
PCS 10-2.4	10V C.T. @ .24A	5V @ .48A	2
PCS 10-8	10V C.T. @ .80A	5V @ 1.6A	4
PCS 12-2.5	12.6V C.T. @ .20A	6.3V @ .40A	2
PCS 12-8	12.6V C.T. @ .64A	6.3V @ 1.3A	4
PCS 16-6.4	16V C.T. @ .40A	8V @ .80A	4
PCS 20-8	20V C.T. @ .40A	10V @ .80A	4
PCS 24-9.6	24V C.T. @ .40	12V @ .80A	4

Toll Free: 800/576-9579
 Phone: 813/536-7861
 Fax: 813/535-3508

8-1(T)